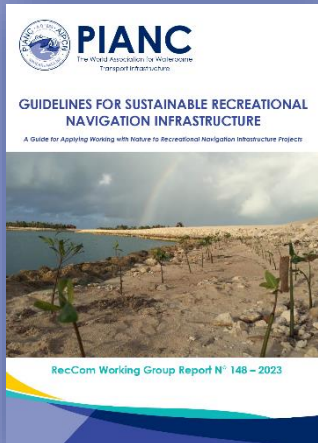




PIANC

The World Association for Waterborne
Transport Infrastructure



PRESS RELEASE

18 April 2023

Guidelines for Sustainable Recreational Navigation Infrastructure

A Guide for Applying Working with Nature to Recreational Navigation Infrastructure Projects

RecCom Working Group 148

120 € (90 pages) - Free for PIANC Members

<https://www.pianc.org/publications/reccom/wg148>

Guidelines for Sustainable Recreational Navigation Infrastructure

This report provides guidelines for the sustainable development of recreational navigation infrastructure (RNI).

There are multiple potential benefits of recreational navigation infrastructure, but it is critical for sustainable development that these opportunities become actual benefits. This report provides guidelines for a design process and illustrates project features that can achieve this goal. It also outlines the benefits that sustainable RNI provide, as an economic engine with social and environmental benefits, in sustainable tourism, in large infrastructure projects, in urban waterfront projects, and as part of broad conservation strategies.

The report identifies and provides analysis of typical concerns that are faced in the practice of achieving environmental sustainability in this type of projects. This Working Group addressed practical concerns and actual implementation challenges, rooted in experience. It discusses the opportunities for synergies with the environmental impact study process and the conflicts when principles and practical approaches are not adequately aligned.

Guidance is also provided for the implementation of innovative solutions to achieve environmental, social, and economic sustainability. The report describes the alignment between Best Practices in marina design and Working with Nature and provides case studies. It includes highlights of 15 projects that illustrate environmental design features, as well as examples of innovative design process implementation and of successful regulatory processes.

A Guide for Applying Working with Nature to Recreational Navigation Infrastructure Projects

WwN philosophy provides a powerful approach to achieve sustainable infrastructure development, by highlighting the planning process recommended to achieve sustainability goals. The PIANC Working Group report No. 176 "Guide for Applying Working with Nature to Navigation Infrastructure Projects" provides guidance beyond the first principles established in the WwN position paper. This report focuses specifically on to recreational navigation infrastructure projects. There are opportunities and issues in the implementation of WwN that are specific or more commonly found in this type of projects because their intrinsic value can be enhanced by environmental and social attributes.

This report builds upon the general WwN guide to address issues that are specific to RNI and may also apply generally to smaller organizations managing multi-purpose facilities with a recreational or tourism function. These guidelines can also be used to evaluate the adherence to Working with Nature (WwN) by recreational navigation infrastructure (RNI) projects.

Notes to Editor

PIANC is the global organisation providing guidance and technical advice for a sustainable waterborne transport infrastructure to ports and waterways. Established in 1885, PIANC unites the international experts for technical, economic, and environmental topics related to waterborne transport. Our members include national governments and public authorities, corporations, industry and academic experts and young and experienced professionals.

Enquiries – For further information, please contact the PIANC General Secretariat at info@pianc.org or 0032 2 253 71 61.