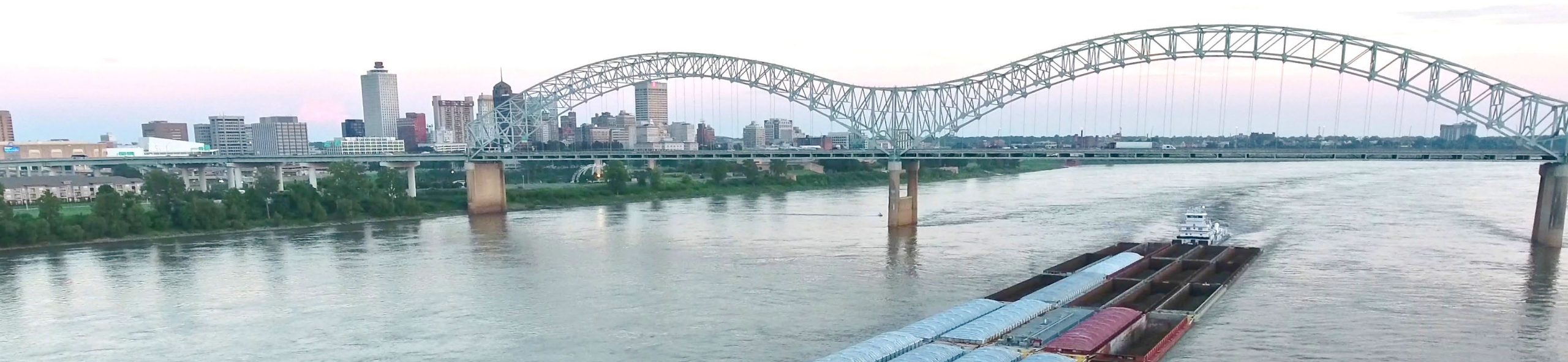


SMART RIVERS 2025

An International Celebration of Large Navigable Rivers



Memphis, Tennessee, USA | September 2025



- Find out about Planning Committee volunteer opportunities
- Discover technical sharing and networking opportunities
- Share challenges of managing large rivers: MR&T Centennial
- Visit and explore beautiful Memphis, Tennessee!



Smart Rivers

Previous Events



Previous Events and Dates

- ❑ 2007 September 16-19, Louisville, KY
- ❑ 2011 September 13-16, New Orleans, LA
 - ❑ <https://pianc.us/news-and-events/recent-events/smart-rivers-2011/>
- ❑ 2013 September 23-27, Maastricht/Liege Belgium
- ❑ 2015 September 7-11, Buenos Aires
- ❑ 2017 September 18-21, Pittsburgh, PA
 - ❑ <https://www.pianc.org/uploads/publications/Proceedings-Congresses/PIANC-SMART-Rivers-proceedings-ok.pdf>
- ❑ 2019 September 30- October 3, Lyon, France <https://smartrivers2019.com/>
- ❑ 2022 October 18-22, Nanjing, China
 - ❑ <https://www.pianc.org/pianc-smart-rivers-conferences>

Smart Rivers 2025 Conference



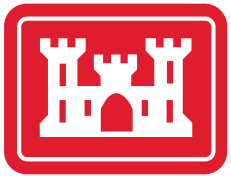
- Agreement signed at PIANC America
- Dr. Sandra Knight, Chair
- Memphis, Tennessee in September 2025



Mr. Francisco Esteban Lefler and Dr. Joe Manous



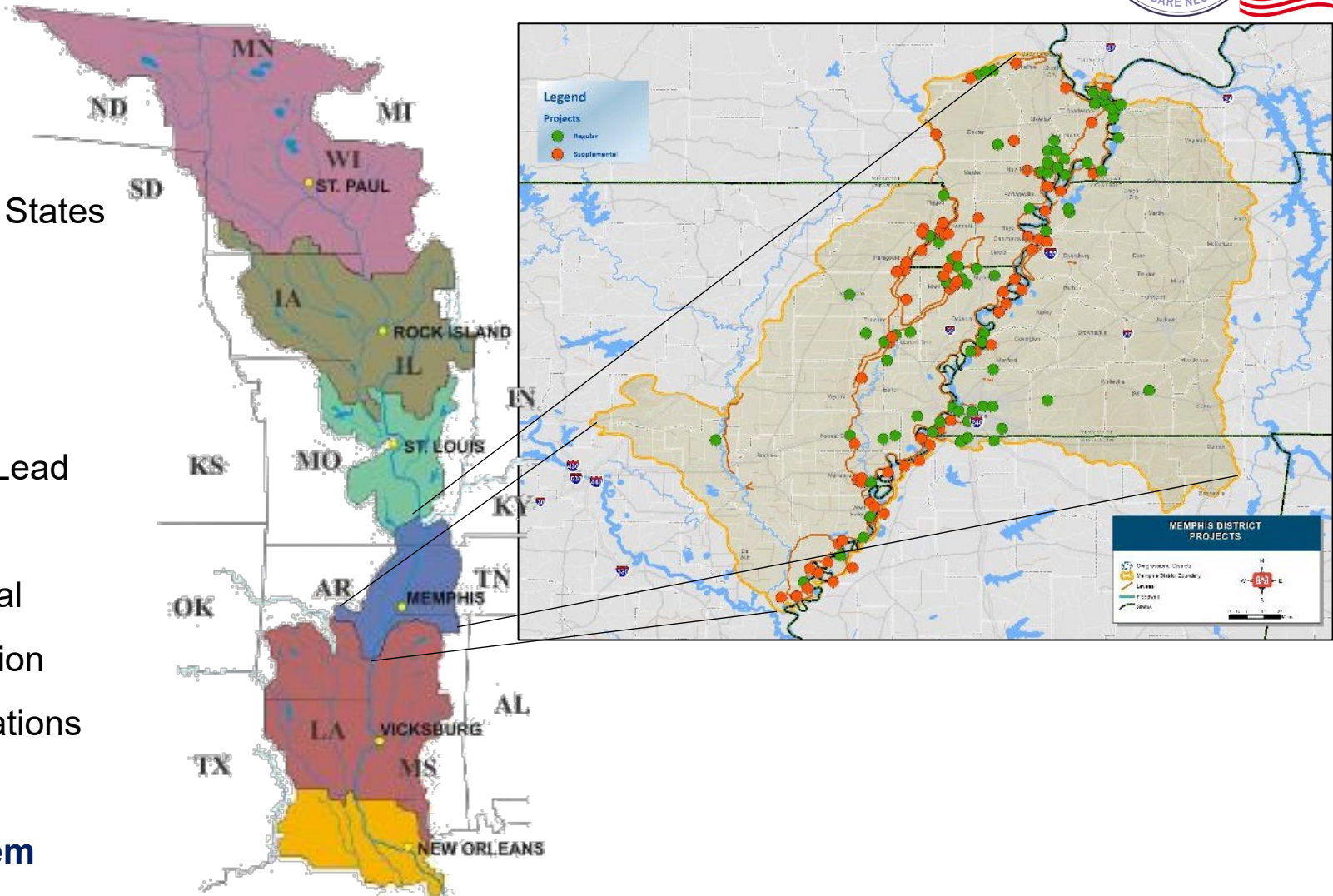
*L-R: Mr. Francisco Esteban Lefler; Dr. Joe Manous;
Dr. Sandra Knight; Col. Brian Sawser, USACE Memphis District*



Memphis District



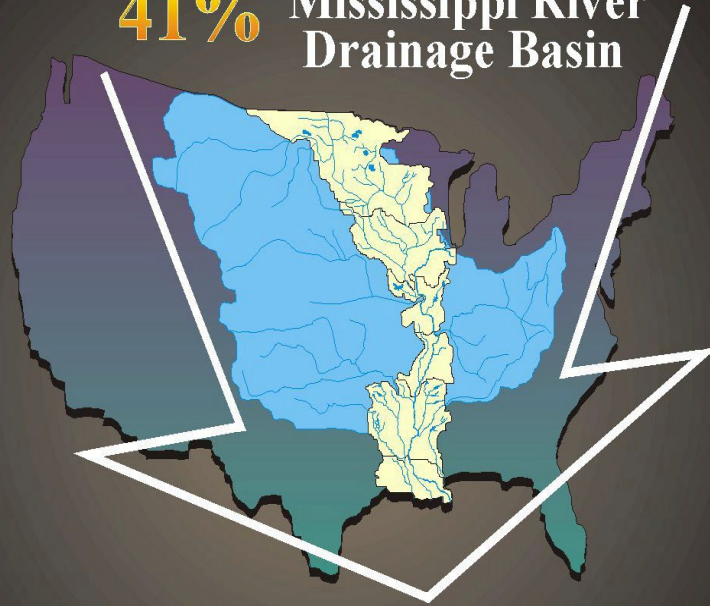
- District Boundary Includes Portions of Six States
- 600 Miles of Navigation Channels
- 1000+ Miles of Federal Levees
- 10 Inland Ports and Harbors
- Lower Mississippi Channel Improvement Lead
- Center for Water Sustainability
- Partnerships with Federal, State, and Local Governments; 92 Levee, Drainage, Irrigation Districts; and non-Governmental Organizations
- **Navigation; Flood Risk Mitigation; Environmental Sustainability, Ecosystem Restoration; Emergency Response**





Mississippi River Drainage Basin: 1,245,244 sq mi

41% Mississippi River
Drainage Basin

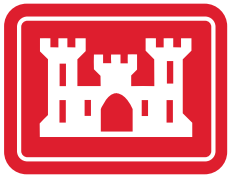


VALUE TO THE NATION



- The Mississippi River Basin or Watershed drains **41%** of continental United States.
- The basin produces **92%** of the nation's agricultural exports, 78% of the world's exports in feed grains and soybeans, and most of the livestock and pork produced nationally.
- The [Port of South Louisiana](#) is one of the largest volume ports in the United States, representing **500 million** tons of shipped goods per year.
- The Mississippi River and its floodplain are home to a diverse population of living things, including more than **260** species of fish (25% of all fish species in North America)





Mississippi River & Tributaries Project



Great Flood of 1927

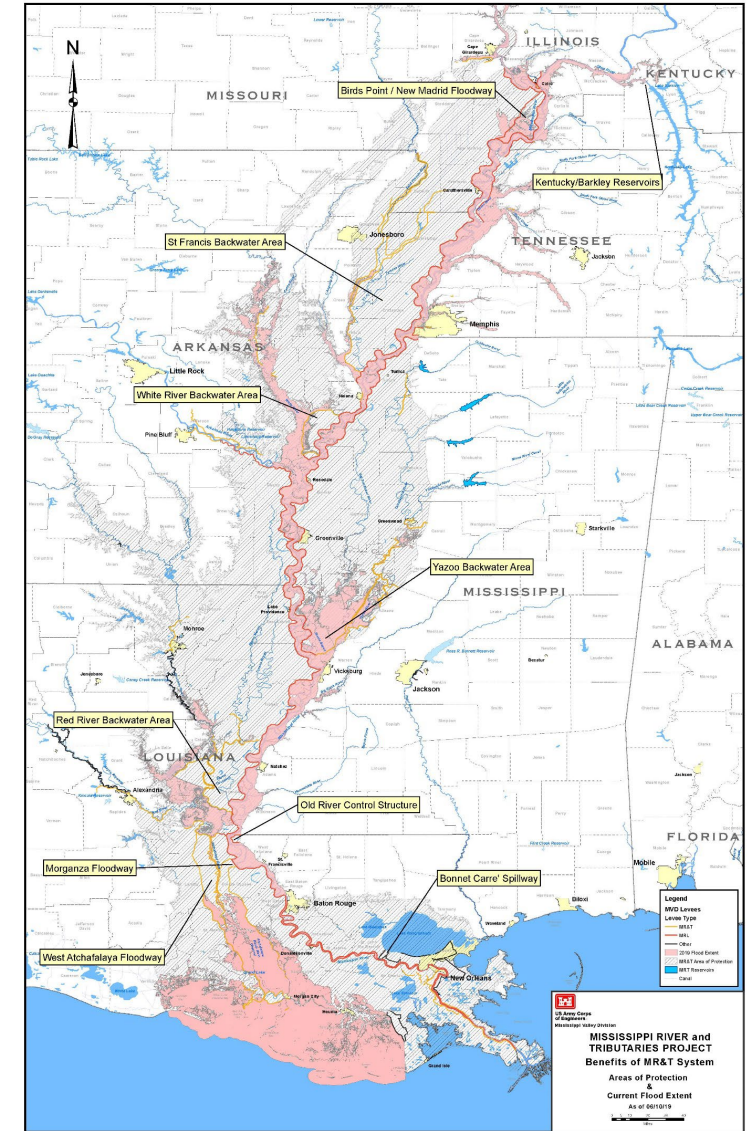
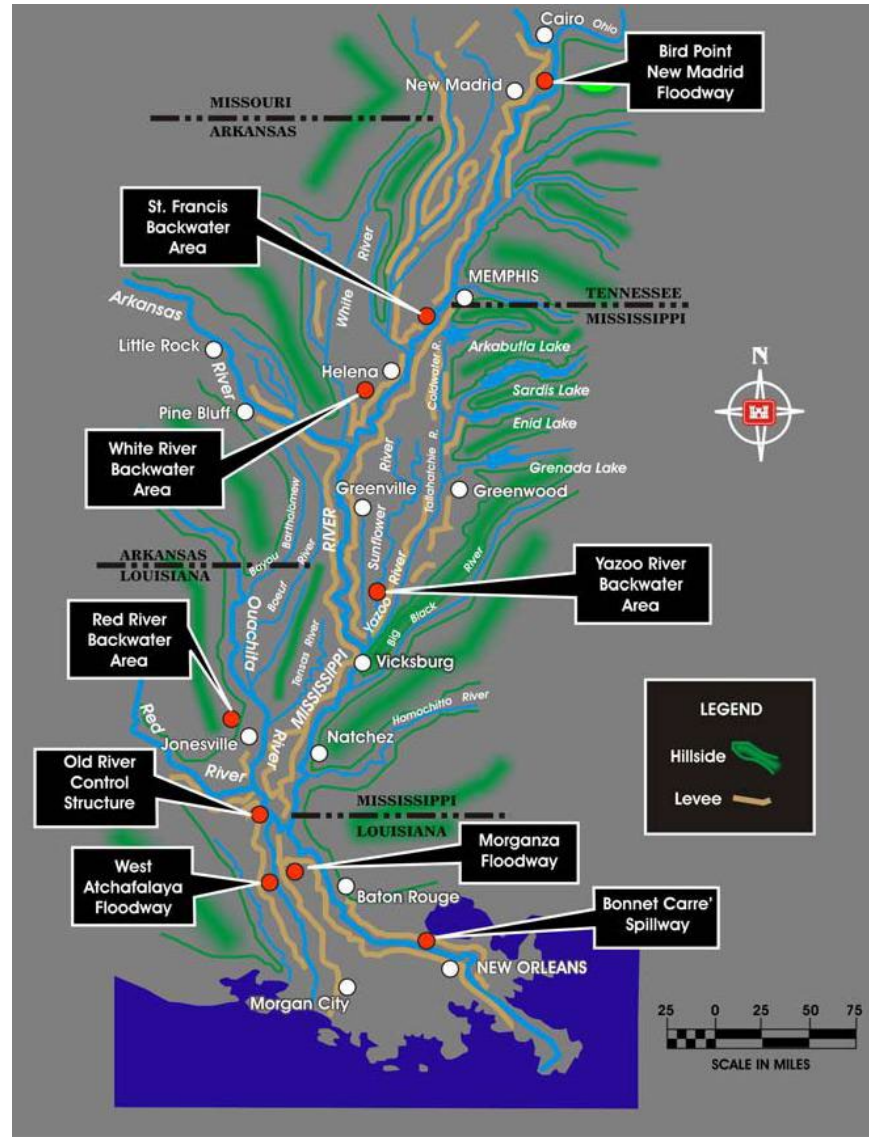
- 27,000 Square Miles Inundated
- 700,000 People Impacted
- 500 Deaths
- Economic Damages = \$1 Billion

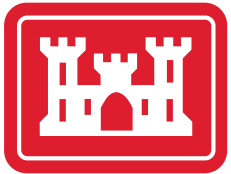
Flood Control Act of 1928 & Subsequent Acts

Signed on May 15, 1928
(13 Months After the First Levee Breach)
Comprehensive Navigation & Flood Control Project

- Levees and Floodwalls
- Floodways and Backwater Areas
- Channel Improvement and Stabilization Features
- Tributary Basin Improvements (Subsequent Acts)

\$16 Billion Federal Invested :
\$2 Trillion Flood Damages Prevented
Benefit to Cost = \$117 : \$1



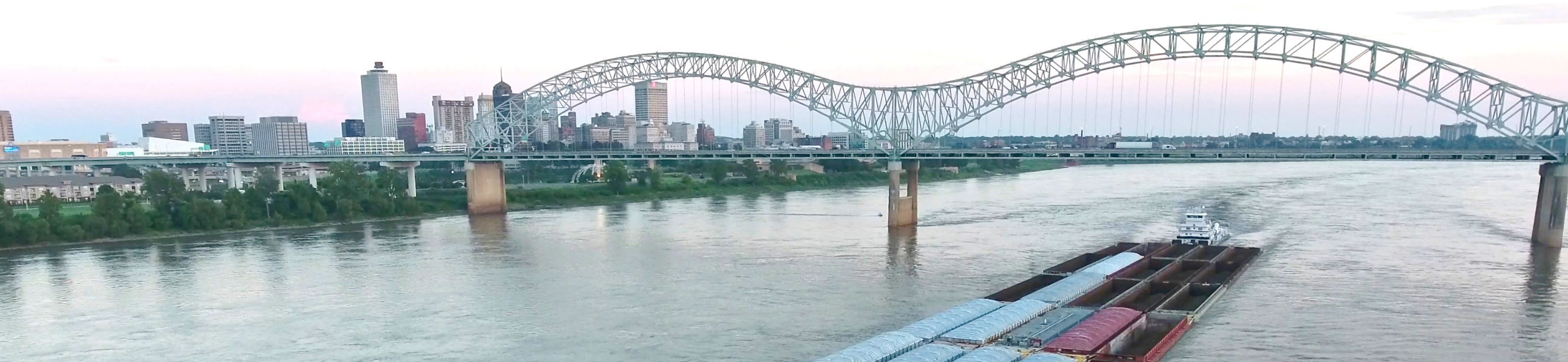


SMART RIVERS 2025

An International Celebration of Large Navigable Rivers



Memphis, Tennessee, USA | September 2025



- Find out about Planning Committee volunteer opportunities
- Discover technical sharing and networking opportunities
- Share challenges of managing large rivers: MR&T Centennial
- Visit and explore beautiful Memphis, Tennessee!

